

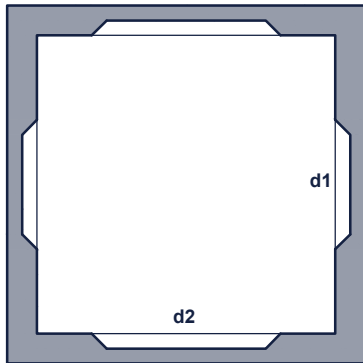
# TOEZICHTPUT/ OPZETSTUK/ DEKSEL

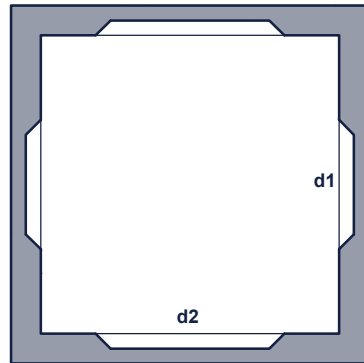
## CHAMBRE DE VISITE/ REHAUSSE / COUVERCLE

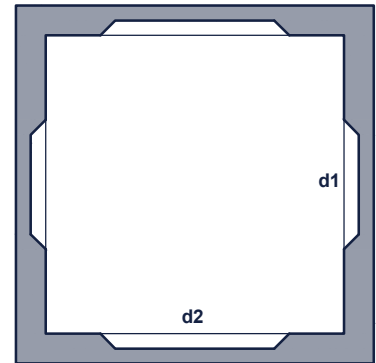
TP\_60/72 IE

### bovenaanzicht vue de dessus

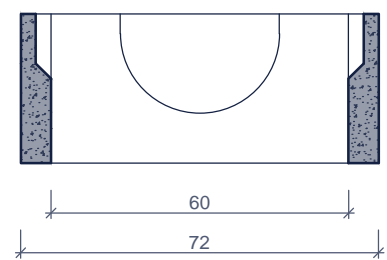
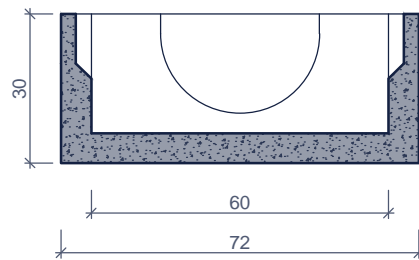
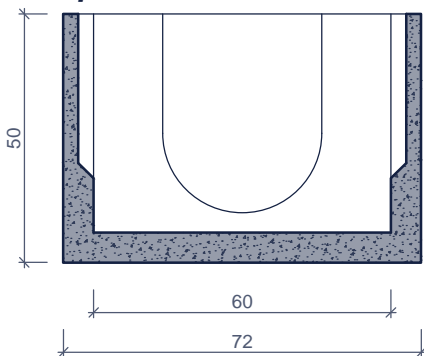
 Toezichtput  
 Chambre de visite

 Kg/St: 225  
 St/Pal: 4

 Toezichtput  
 Chambre de visite

 Kg/St: 143  
 St/Pal: 6

 Opzetsuk  
 Rehausse

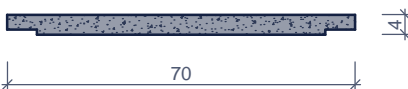
 Kg/St: 110  
 St/Pal: 6


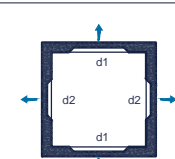
### doorsnede coupe



Deksel

Kg/St: 80



Kenmerken	TP_60/72 IE	Caractéristiques	Principe
in - / uitlaat d1	Ø 32cm	entrée / sortie	 <p>Plaatsingsvoorschriften op aanvraag            Prescriptions de pose sur demande</p>
in - / uitlaat d2	Ø 20cm	tuyau d'attente - aspiration	
hijsslussen	2 (toezichtput / chambre de visite)	points d' ancrage	
buitenafmetingen	72 X 72 X 50	dimensions extérieures	
verkeersbelastingsklasse	A15 (NBN EN 124)	classe de charge de traffic	
omgevingsklasse	EE3 (NBN B 15-001)	classe d'environnement	
milieuklasse	XC4, XF1 (NBN EN 206-1)	classe d' exposition	
druksterkteklasse	C35/45	classe de résistance	

 afmetingen in cm - wijzigingen voorbehouden  
 dimensions en cm - sous réserve de modifications